

Simulation is more than Software®



CADFEM Engineering Simulation Cloud

Cloud Computing with ANSYS – Secure, flexible, and always available

For more than ten years, CADFEM has offered a cloud service (Software as a Service, or SaaS) with eCADFEM, which is currently well established in the German-speaking ANSYS market and enjoys great popularity.

Now, CADFEM is taking the next step and creating the CADFEM Engineering Simulation Cloud, which provides the opportunity to use hardware, as well as software, as an on demand solution (i.e. offering them in a short term leasing option) with comprehensive maintenance.

CADFEM Engineering Simulation Cloud offers ANSYS Structural Mechanics, ANSYS CFD, and the cloud services as a full-value, interactive 3D workplace – private, flexible, reliable, and secure – all from a single provider.

Advantages:

- Calculate previously insolvable models using flexible resource expansion
- Noticeably reduce project completion times without a need to simplify the models
- Use high-performance technology (HPC) without delay or unnecessary complications

Support/Contact

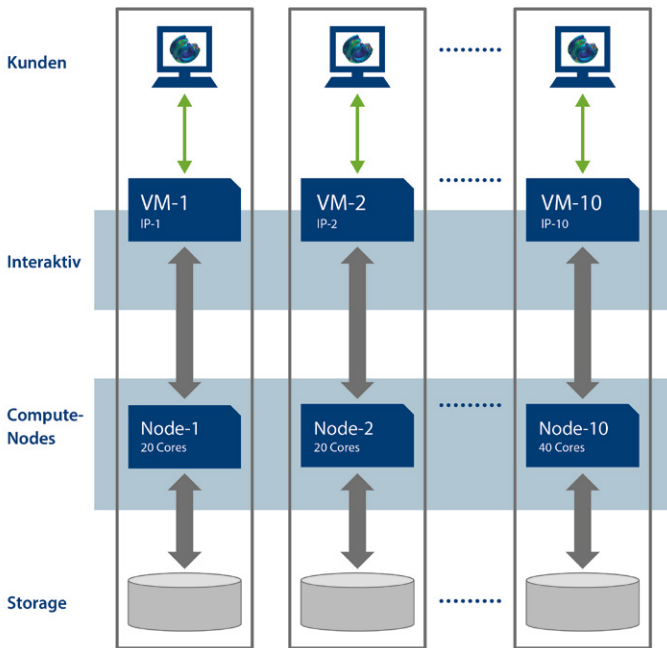
Gerhard Zelder
P +49 (0) 80 92-70 05-87
gzelder@cadfem.de

CADFEM Engineering Simulation Cloud

Cloud Computing with ANSYS – Secure, flexible, and always available

Why cloud computing?

Many computational engineers successfully employ high-performance computing (HPC) platforms in combination with ANSYS. But high-performance computing is by no means established in all areas of industry and research. ANSYS is still often used with limited, low-performance IT infrastructure. Frequently, there is often no access to fast, modern hardware. This situation is often compounded by the fact that the software and / or hardware prerequisites are not fulfilled, or there is insufficient knowledge for the configuration and operation of infrastructure suitable for the unique requirements of simulation. This is particularly true of the choice of server networking configuration for efficient 3D visualization or “Remote Solve Management”.



Security through client-specific computer access.

Advantages for the user

Quick setup

The capability of adding virtual infrastructure that can be used right away, with a few clicks, allows CAE users to increase their productivity. The time required for acquisition and construction of an infrastructure is superfluous.

Variability of resources

The offered server infrastructure can be used for running background processes, simulation tasks, as well as for interactive 3D work (i.e. model preparation, networking, analysis, and post processing). Thus covers the entire spectrum of hardware requirements.

Security

CADFEM Engineering Simulation Cloud users are strictly isolated from one another and from the outside. This leaves your data well-protected.

Focus on core competencies

The CADFEM Engineering Simulation Cloud is provided as a complete service package. There is no need for CAE users to concern themselves with setup or operation of software and servers. Therefore, they can focus entirely on their own simulation competencies.

Reliable results

In order to solve computational hurdles more quickly customers may request that their simulation process be reviewed by an experienced CADFEM project engineer.

Strong partners

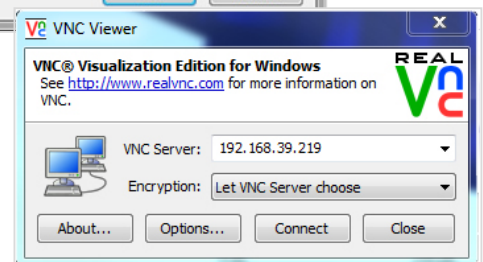
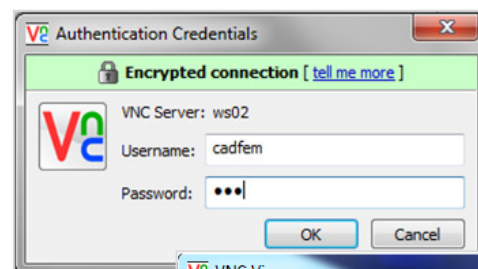
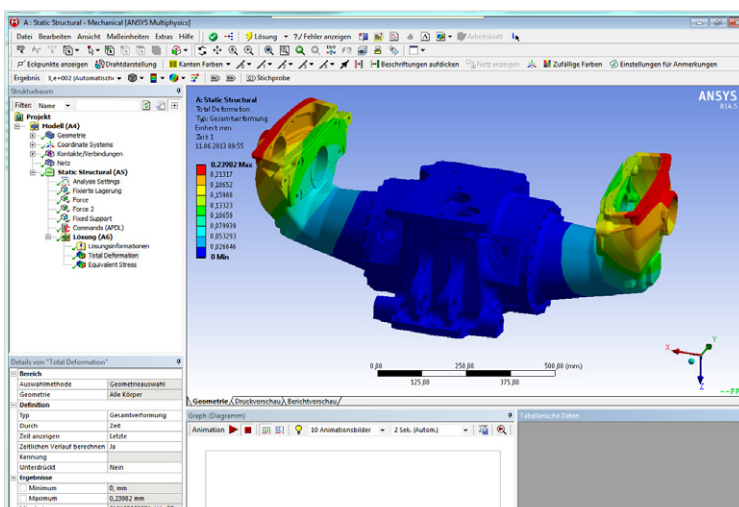
The CADFEM Engineering Simulation Cloud is operated by CADFEM with the support of its partners: HP, NICE DCV, and Spirit / 21.

CADFEM Engineering Simulation Cloud

Cloud Computing with ANSYS – Secure, flexible, and always available

Technical information about the cloud

| | |
|-------------------------------|---|
| Remote access / login | <ul style="list-style-type: none"> • VNC Viewer / NICE DCV • Individual access data |
| Secure Connection | <ul style="list-style-type: none"> • 256-bit AES encryption • Data center certified according to DIN ISO 27001, based in Karlsruhe, Germany |
| Remote graphics with NICE DCV | <ul style="list-style-type: none"> • Low bandwidth • Efficient 3D rendering |
| ANSYS: flexible licensing | <ul style="list-style-type: none"> • eCADFEM • Use client license in the cloud • Short-term rental for the cloud |
| HPC available immediately: | <ul style="list-style-type: none"> • 3D interactive Cloud-workplaces: <ul style="list-style-type: none"> • MS Windows for pre- und postprocessing (eight cores, 96...192 GB RAM) • Dedicated compute node for large models (24 Cores, 384 GB RAM) • Additional Server for large batch jobs: <ul style="list-style-type: none"> • 112 cores (a total of 1.2 TB RAM) for comprehensive HPC-analyses models • Installed, configured, and immediately available (ANSYS 18+19, RSM, MPI, etc.) |



CADFEM Engineering Simulation Cloud

Cloud Computing with ANSYS – Secure, flexible, and always available



HP creates new technological capabilities that open important opportunities for individuals, companies, government agencies, and society in general. As one of the largest technological companies in the world, HP offers a portfolio that includes printing solutions, personal computing, software, services, and IT infrastructure for solving client-specific problems. Further information about HP (NYSE: HPQ) can be found at www.hp.com

CADFEM Engineering Simulation Cloud

CADFEM Engineering Simulation Cloud allows you to use the CADFEM competence as well as the tested technologies of our reliable partners: ANSYS, HP, NICE, and Spirit/21.



CADFEM is recognized for its CAE competence since 1985 and offers everything that determines the success of a simulation from one source: Software and IT solutions. Advice, support, engineering. Know-how transfer. As the ANSYS Competence Center FEM, we support ANSYS users in Central Europe. www.cadfem.net



ANSYS is the world's biggest provider of simulation software and offers programs for almost every application. ANSYS is one of the most widely used CAE solutions in industry, research, and teaching. www.ansys.com

ANSYS is a registered trademark of ANSYS, Inc.; all products named here are registered trademarks of their respective owners.



NICE offers comprehensive HPC grid and cloud solutions for companies and organizations that increase the user's productivity with computing resources and applications. NICE's portfolio, which includes Remote 3D Visualization and HPC Portal, is the basis for an efficient grid and cloud infrastructure that provides great user-friendliness without sacrificing flexibility or control. www.nice-software.com

SPIRIT/21

Consulting, service, and maintenance: These are the core competencies of SPIRIT/21. Our goal is to increase the market success of our customers, who span a range from mid-sized to international companies. We will advise you about how to discover innovation potential using the latest technologies and software solutions. Our solutions are customized to our clients and are aimed primarily at the achievement of two goals: reducing costs and preparing our clients for the future. SPIRIT/21 works independently of any specific industry or platform – from small sub-projects to managed service. www.spirit21.de

CADFEM GmbH
Marktplatz 2
85567 Grafing near Munich
P +49 (0) 80 92-70 05-0
info@cadfem.de
www.cadfem.de

Further offices:
Berlin, Chemnitz,
Dortmund, Frankfurt,
Hannover and Stuttgart

CADFEM (Austria) GmbH
Wagenseilgasse 14
1120 Vienna
P +43 (0) 1-587 70 73
info@cadfem.at
www.cadfem.at

CADFEM (Suisse) AG
Wittenwilerstrasse 25
8355 Aadorf
P +41 (0) 52-368 01-01
info@cadfem.ch
www.cadfem.ch